

Realize that no one naturally acts wisely in a fire. Panic may always break out.

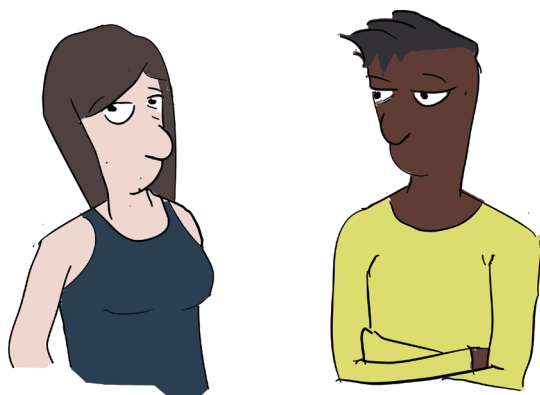
Smoke development makes you rapidly lose your orientation, even in the smallest rooms. A house fire spreads due to the presence of plastics and electrical equipment enables a fire in a house to spread very quickly.

You have only **three minutes** to safely leave your house. It is those important first minutes that matter to yourself and your family members.

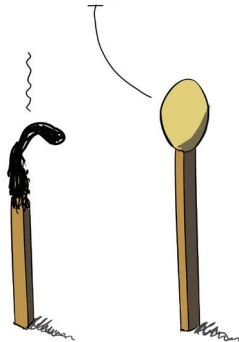
### Some tips

- Study the escape route on the evacuation plan
- Make sure that the escape routes are always clear
- Find out where the fire extinguishers and fire alarm buttons are

WHAT DO YOU MEAN, "FIRE BLANKET",  
ISN'T A FIRE HOT ENOUGH ALREADY?



BURN OUT, RIGHT?



But suddenly a fire breaks out anyway.

### What to do?

- Stay calm!
- Leave your room and close the door
- Activate the fire alarm button
- Take the shortest way out and don't use the elevator
- Trying to put the fire out yourself? Don't put yourself in danger unnecessarily
- Go to the assembly point, don't go back inside
- Call the **emergency number** and state your name and location



CAMPUS ETTERBEEK 02 629 11 11  
CAMPUS JETTE 02 477 61 12

### Questions?

Office for Prevention and Environment  
preventie@vub.ac.be  
[www.vub.ac.be/preventie/englishinfo.html](http://www.vub.ac.be/preventie/englishinfo.html)

# FIRE SAFETY IN YOUR STUDENT ROOM



HM, MUST BE THE FIREWALL



Vrije  
Universiteit  
Brussel

BE CAREFUL  
WITH HALOGEN  
LIGHTING AND  
SPOTS, KEEP AWAY  
FROM FLAMMABLE  
MATERIALS.



CAMPUS ETTERBEEK 02 629 11 11  
CAMPUS JETTE 02 477 61 12

DON'T PLUG MULTIPLE  
CORDS TOGETHER AND  
USE GROUNDED JUNCTION  
BOXES ONLY.

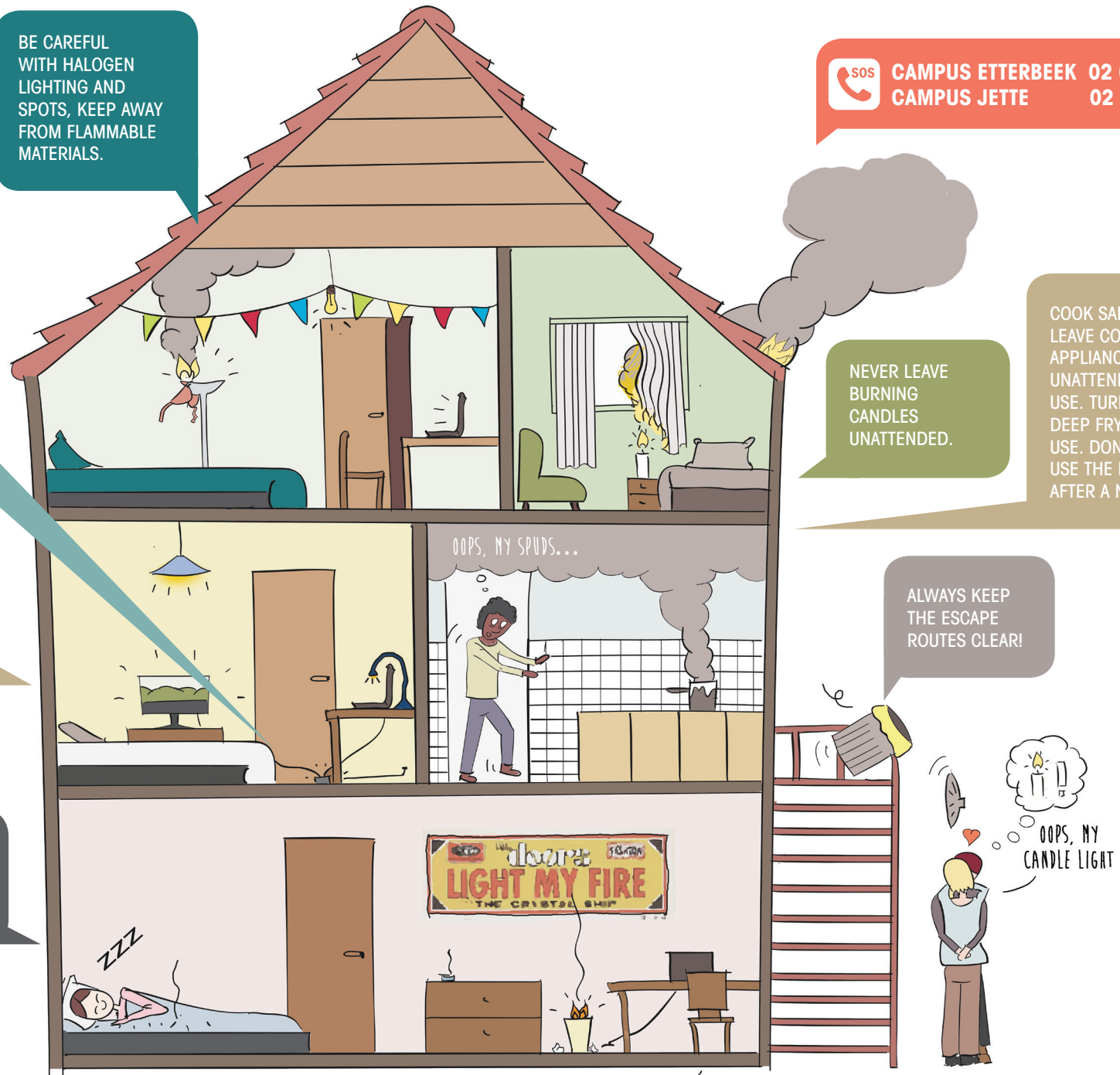
TURN YOUR COMPUTER  
AND TELEVISION OFF  
BEFORE YOU GO OUT OR  
GO TO BED.

NEVER SMOKE IN BED!  
DON'T THROW YOUR  
CIGARETTE BUD IN THE  
WASTE-PAPER BASKET.

NEVER LEAVE  
BURNING  
CANDLES  
UNATTENDED.

COOK SAFELY. DON'T  
LEAVE COOKING  
APPLIANCES  
UNATTENDED WHILE IN  
USE. TURN OFF YOUR  
DEEP FRYER AFTER  
USE. DON'T COOK OR  
USE THE DEEP FRYER  
AFTER A NIGHT OUT.

ALWAYS KEEP  
THE ESCAPE  
ROUTES CLEAR!



## Fire prevention

### 1. In the room

- Never smoke in bed. Don't throw your cigarette bud in the waste-paper basket.
- Never leave burning candles unattended.
- Be careful with halogen lighting and powerful spotlights: keep away flammable materials.
- Don't dry clothes on radiators.
- Never adjust electrical appliances yourself.
- Turn off electrical devices (computer, TV...) when you go to sleep or when you leave.
- Don't plug multiple extension cords together and only use grounded junction boxes with a CE mark.
- Party in your student room? Think about safety as well: keep a fire extinguisher nearby and keep the number of the emergency services (112) at hand.

### 2. Cooking

- Cooking in your student room is prohibited.
- Turn off the stove when you are finished cooking and when you leave the kitchen.
- Turn off your deep fryer after use.
- Don't leave your pots unattended.
- Use microwave safe dishes or bowls in the microwave, no aluminum foil.
- Clean the toaster regularly.
- Don't cook or use the deep fryer after a night out.

### 3. Evacuation

- The mandatory fire alarms will alert you in case of fire, and security lighting will come on during a blackout. Make sure to keep these devices in good condition.
- Keep the aisles free, so you can leave the room quickly in the event of a fire.

### 4. Possible scenarios

#### Fire in a pan or deep fryer:

- Cut off the power supply: turn off the stove or pull the plug from the socket.
- Cover the pan with a lid or cover the deep fryer with a fire blanket.
- Never use water on burning oil or grease.
- Never try to move a flaming pot or pan.

#### Bin or ashtray on fire:

- Cut off the burning object's oxygen supply.
- When this doesn't help, extinguish with water or a hand extinguisher.

#### Clothes catching fire:

- Don't start running
- Lie on the floor as fast as you can and roll around
- As a bystander you can help by wrapping someone in a blanket

### 5. What do you do in case of a fire?

- Warn everyone in the building as soon as possible: press the alarm button and yell "fire".
- Leave the room immediately when there's a fire alarm going off and take the shortest way out. Never take the elevator. In case of fire stay close to the ground.

- Call the emergency services (112) or the internal emergency number:
  - Campus Etterbeek: 02 629 11 11
  - Campus Jette: 02 477 61 12
- Trying to put the fire out yourself? Check for your own safety before starting to extinguish a fire. Stop after one extinguishing attempt and don't put your life at risk.
- Never go back inside the burning building. Gather all evacuees at a safe place (assembly point).
- Count to see if everyone is present and inform the emergency services in case someone is missing.

#### 6. Unjustified fire alarm

When the fire alarm is unjustly set off, the person responsible will be charged a fine of 50 EUR plus repair costs.

If the person responsible does not spontaneously come forward, 50 EUR will be charged to every resident of the unit where the alarm was activated (Article 9 of the rental agreement: Solidarity liability).